



Threshers Drive | Weaving | Maidstone | ME14 5UA

£375,000





## Key features

- Popular Grove Green location
- Conservatory
- Front and rear gardens
- Convenient transport links for road via M20 and train via Bearsted or Maidstone
- Shower en-suite off principal bedroom
- Guest wc
- Excellent neighbourhood amenities

## Description

Charming 3 bedroom family home in the popular neighbourhood of Weaving located on a cul-de-sac with convenient transport links and excellent local amenities.

## Directions



Charming 3 bedroom family home in the popular neighbourhood of Weaving located on a cul-de-sac with convenient transport links and excellent local amenities.

Accommodation comprising:

Ground floor:

Entrance hallway: With laminate wooden floor. Carpet to stairs leading to 1st floor.

Guest cloakroom: With WC and washbasin.

Lounge: With oriel front window, laminate wooden floor, open archway leading to dining room.

Dining room: With patio doors leading to conservatory, opening to kitchen, laminate wooden floor

Kitchen: With wall and floor mounted kitchen units in a u-shaped arrangement with integrated oven, gas hob, extractor hood and fridge freezer. Gas combi boiler housed in cupboard. Space and plumbing for under counter washing machine. Part-tiled walls

Conservatory: With tiled floor and patio doors to rear garden.

First floor:

Principal bedroom: With carpet to floor and built-in wardrobes with ensuite shower

Shower: Off the principal bedroom, with tiled floor and walls, shower cubicle and washbasin.

Second bedroom: With carpet to floor

Third bedroom: With carpet to floor and built-in bed unit

Family bathroom: With bathtub, wc and washbasin, tiled walls and floor.

Landing: With carpet to floor and loft access hatch

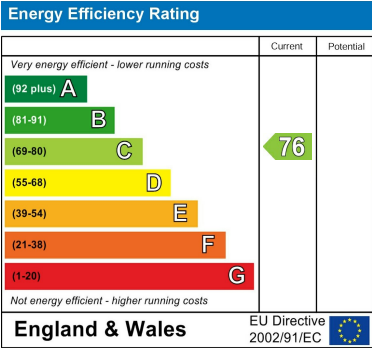
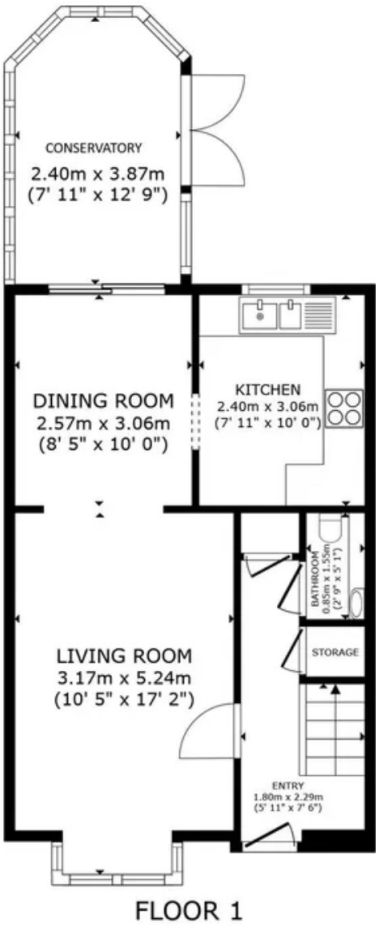
Externally, the property benefits from a front garden and an enclosed rear garden and an allocated parking space.

EPC Rating: C

Location



Floor plans



Council Tax Band D     EPC Rating C



68 South Hill Avenue  
Harrow  
HA2 0NH  
02081501988  
sales@leafyestates.co.uk  
leafyestates.co.uk